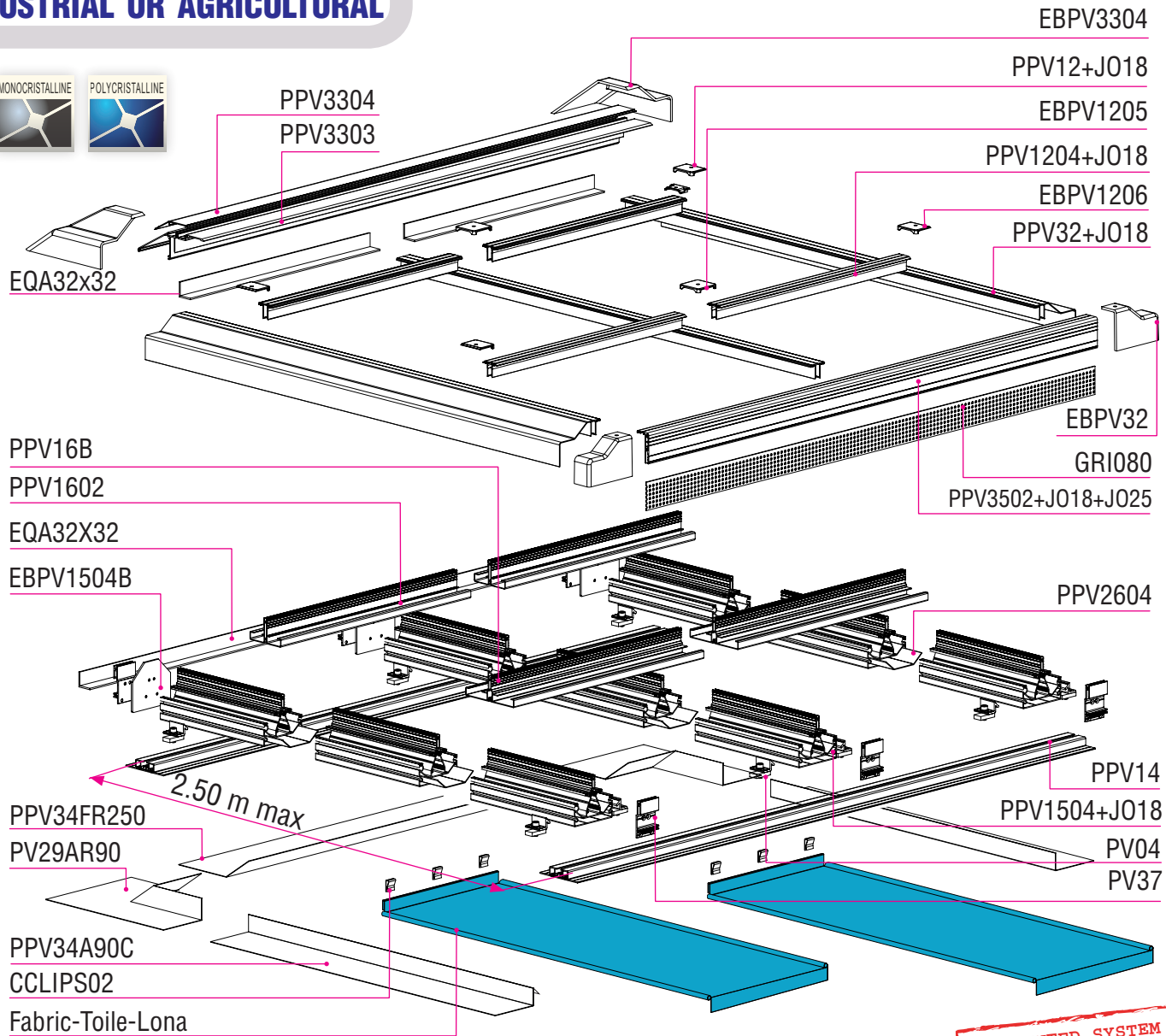


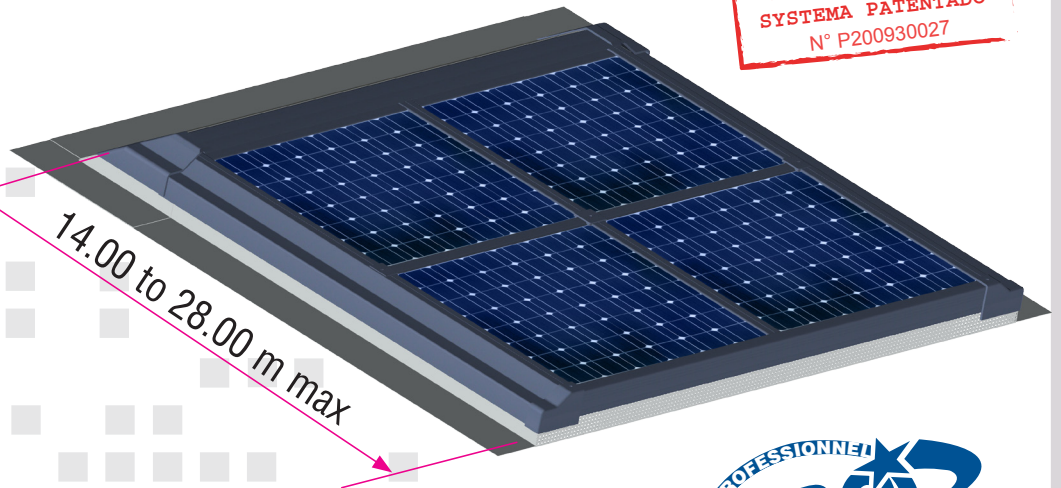
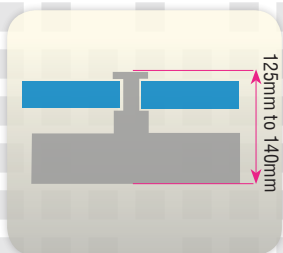
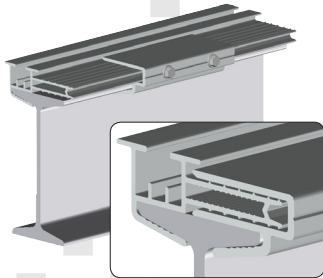
INTEGRATED SYSTEM 105M

COMPLETE (35 à 50 C)
INDUSTRIAL OR AGRICULTURAL

105M (35 to 50 C) - Integrated mounting system for industrial or agricultural buildings
 Système intégré complet 105 (35à50C) industriel ou agricole
 Sistema 105M integrado tejado industrial o agrícola 105 (35-50) C con marco
 Dachintegrierte Unterkonstruktion 105M für industrielle oder landwirtschaftliche Bedachungsanlage

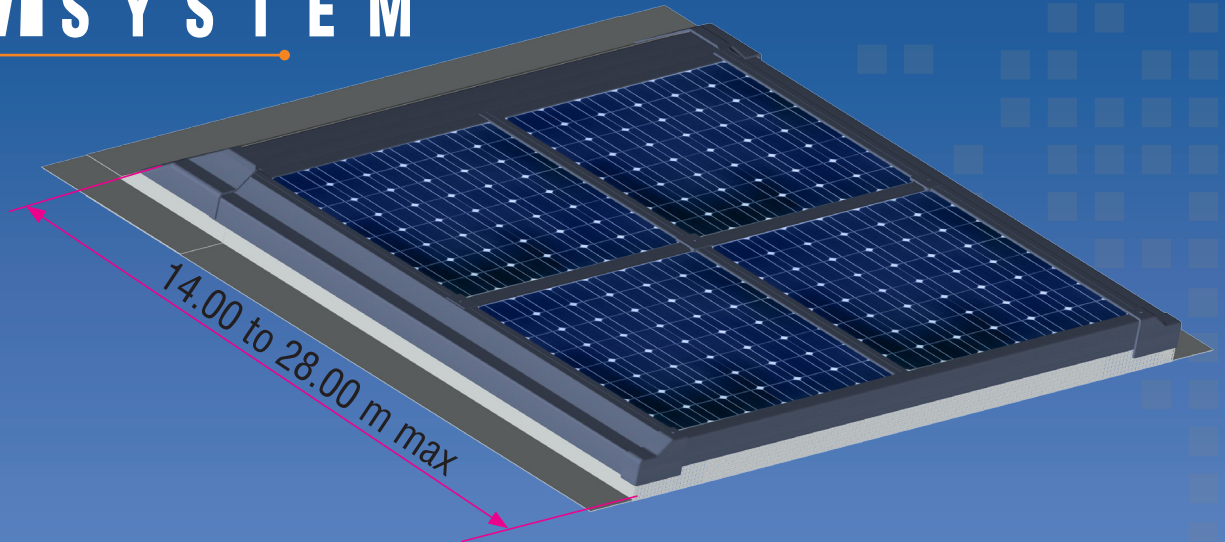


PATENTED SYSTEM
 SYSTÈME BREVETÉ
 SISTEMA PATENTADO
 N° P200930027

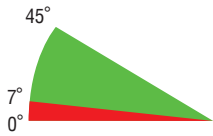


INDUSTRIAL OR AGRICULTURAL COMPLETE INTEGRATION

105M INTEGRATED SYSTEM



+ ADVANTAGES



Tilt angle

- Up to 28 m high
- Cable duct
- Internal connection

For 35mm to 50mm thick panels



LANDSCAPE INSTALLATION
RECOMMENDED



FOR FRAMED PANELS

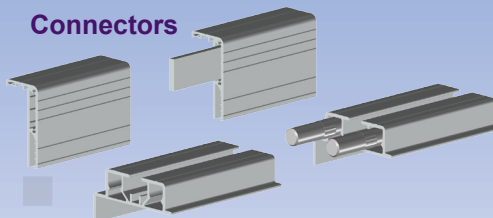
Structure components:

Aluminium profiles
Aluminium foundry pieces (AS13)
A2 stainless steel fastenings RAL 7016 +
EPDM washer and joint

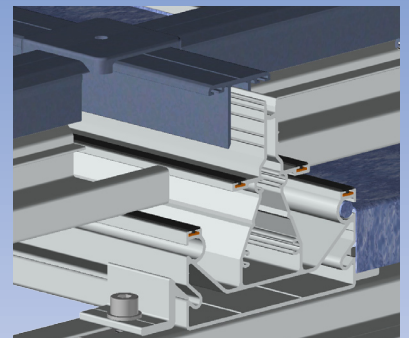
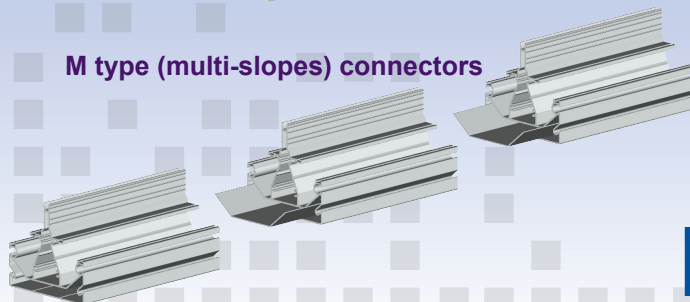
Finish:

- Mill finish
- Powder coated with PTFE
textured finish finish RAL 7016

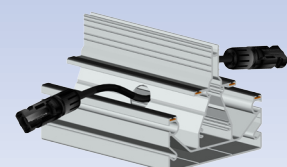
Connectors



M type (multi-slopes) connectors



Cable duct



MITJAVILA